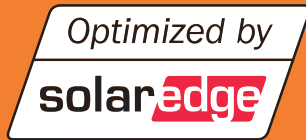


# Silver Plus Poly

## S610SEP-SERIES SW



### KEY FEATURES

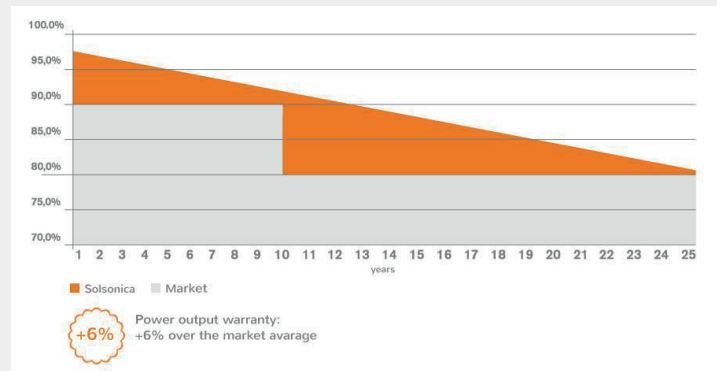
- ☀ Up to 25% more power production
- ☀ Higher ROI (Return On Investment)
- ☀ Module level performance monitoring\*
- ☀ SafeDC™ for automatic DC safety\*
- ☀ “Made in Europe” Quality
- ☀ 12-year Product Warranty\*\*
- ☀ High resistance to wind and snow loads
- ☀ Low value of NOCT for optimal performance

### CERTIFICATIONS

- ☀ “PID free test” IEC 82/685/NP
- ☀ Salt mist corrosion test IEC 61701
- ☀ Ammonia resistance test TUV protocol
- ☀ “Made in EU” as result of factory inspection
- ☀ IEC 61215 / IEC 61730
- ☀ PV Junction Box EN 50548



### LINEAR PRODUCIBILITY WARRANTY\*\*



25 years linear producibility warranty:  
2.5% power degradation in the first year, 0.7% per annum over the 24 subsequent.

\* Require additional SolarEdge hardware. \*\* Warranties do not apply if the modules are not installed as described in the PV Modules Use and Maintenance Manual.

# Silver Plus Poly

## S610SEP-SERIES SW



### ELECTRICAL PARAMETERS

STC*	Pmax	Vmp	Imp	Voc	Isc	Eff.
Product Code	(W)	(V)	(A)	(V)	(A)	(%)
S610SEP-250	250	30.0	8.32	37.5	8.83	15.1
S610SEP-255	255	30.2	8.44	37.7	8.96	15.4
S610SEP-260	260	30.4	8.55	37.8	9.08	15.7

\* STC: Irradiation 1000W/m<sup>2</sup>, AM 1.5, Module Temperature 25 ° C

### ELECTRICAL PARAMETERS AT NOCT\*\*

NOCT	Pmax	Vmp	Imp	Voc	Isc
Product Code	(W)	(V)	(A)	(V)	(A)
S610SEP-250	183.5	27.6	6.66	35.3	7.13
S610SEP-255	187.2	27.7	6.75	35.4	7.24
S610SEP-260	190.6	27.9	6.84	35.5	7.33

\*\* NOCT: in Nominal Operating conditions (800W/m<sup>2</sup>, T 20 °C, Wind speed 1 m/s)

### THERMAL, ELECTRICAL AND MECHANICAL PROPERTIES

Power tolerance (W)	0 / +4
NOCT (°C)	43 ± 2
Isc Thermal Coefficient <sup>1</sup> (%/°C)	0.042
Voc Thermal Coefficient <sup>1</sup> (%/°C)	-0.335
Pmax Thermal Coefficient <sup>1</sup> (%/°C)	-0.454
Maximum system voltage (V)	1000
Reverse Current Limit (A)	15
Maximum front load (Pa)	5400
Maximum back load (Pa)	2400
Hailstones Resistance (dia. / vel.)	25 mm, 23 m/s

### DESIGN FEATURES

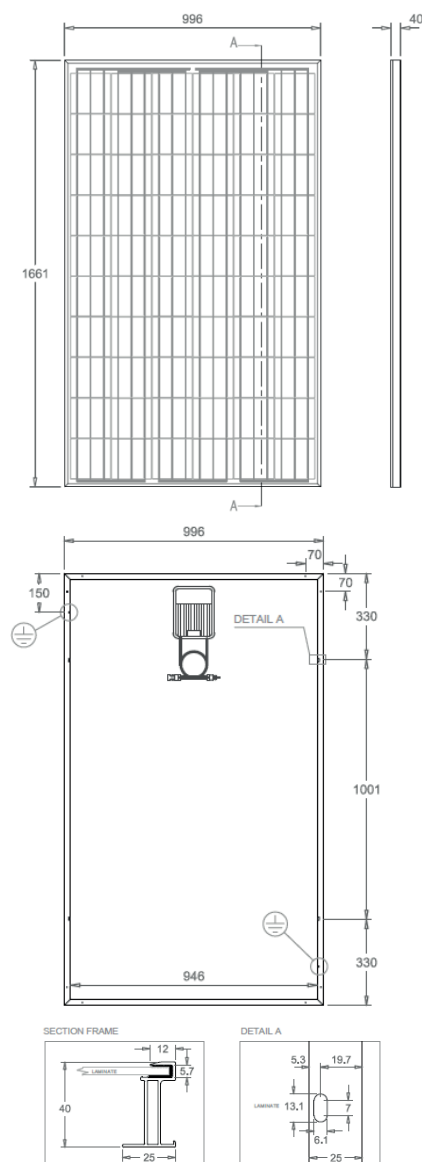
Cell type	Polycrystalline silicon / 3 bus bar
Cell size (mm)	156 x 156
Module size LxHxW (mm)	1661 x 996 x 40
Frame	Anodized aluminum
Weight (kg)	19
Junction box protection	Class IP67
Junction box electronics	RoHS
By-pass diodes	3
Cable (2x)	0.95 m / 6 mm <sup>2</sup>
Connectors	MC4 compatible
Glass	Tempered / 3.2 mm

### PV SYSTEM DESIGN

	with SolarEdge inverter	with third-party inverter
Output current max. (A)	15	10
Operating output voltage (V)	5-60	5-Voc of PV module
String design rules	according to SolarEdge inverter specs	according to inverter specs
Parallel strings of different length/orient.	yes/yes	no/yes

<sup>1</sup>measured by Fraunhofer ISE

### TECHNICAL DRAWINGS (dimensions in mm)



#### NOTES:

- This technical datasheet complies with requirements of standard EN 503801.
- Gala Tech reserves the right to make changes to product specifications.
- Technical drawings are exclusive property of Gala Tech according to the regulations in force.